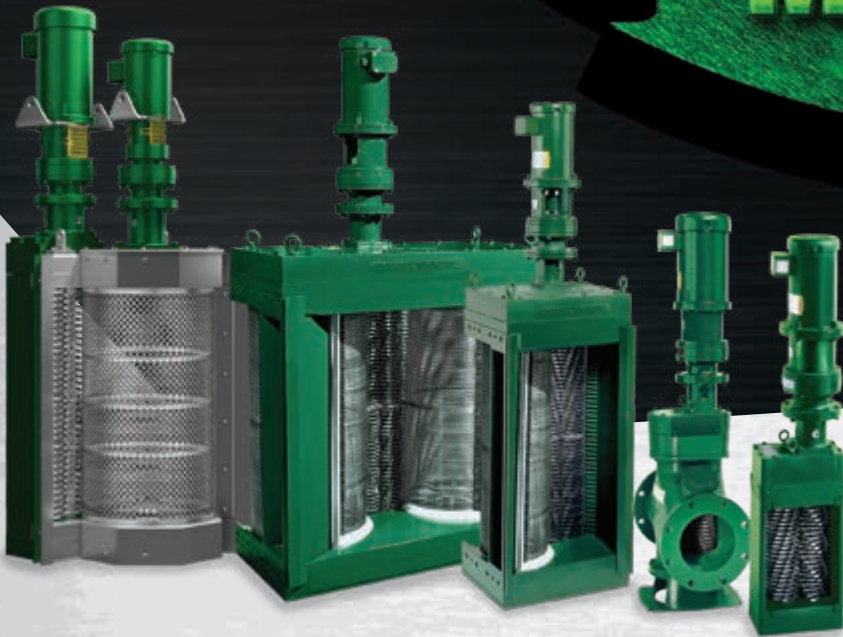


MONSTER METAL®



Select One of These Monsters for Monster Metal®:

- 30004T In-line Muffin Monster®
- 30005 Open-channel Muffin Monster®
- CMD-XD2.0 Single-drum Channel Monster®
- CDD-XD2.0 Dual-drum Channel Monster®
- Channel Monster® FLEX

CUTTERS FOR HARSH ENVIRONMENTS

And Monster Metal is backed by an extended warranty*

Abrasion-resistant

- Typical hardness of wastewater alloy steel cutters.
- Rockwell HRC 55-60.

Corrosion-resistant

- Higher chromium content typically associated with stainless steel.

Longer Life

- Best in combination abrasive, corrosive environments.
- Double the life of typical industry cutters.
- Extended 5-year warranty on the Muffin Monster and 3-year warranty on the Channel Monster and Channel Monster FLEX*.

Wastewater is tough on grinders. Gritty material wears the cutters and acidic conditions corrode them. Previously, operators needed to choose hard steel alloy cutters and sacrifice corrosion resistance. Or choose softer corrosion-resistant stainless steel cutters and sacrifice abrasion resistance. Now you do not have to choose. JWC Monster Metal is a hard, corrosion-resistant alloy.

Monster Metal is a trade secret alloy with the right balance of carbon for strength and chromium for corrosion resistance. The result is Monster Metal increases the usable life of your grinder cutters.



Contact Us Today For More Details

toll free: **800.331.2277** | phone: **949.833.3888** | email: **jwce@jwce.com** | web: **www.jwce.com**

Monster Metal is available only in North America

*Monster Metal Extended Warranty extends warranty coverage to a Monster Metal Muffin Monster cutter cartridge for five (5) years and to a Monster Metal Channel Monster cutter cartridge for three (3) years including most wear components. Monster Metal Extended Warranty is available only on select grinder models and in sewage installations.

©2022 JWC Environmental. JWC's Santa Ana, California facility is registered by UL to ISO9001:2015 #10001313 QM15. JWC Environmental logo, Auger Monster logo, Muffin Monster logo, Auger Monster, Bandscreen Monster, Bar Screen Monster, Chain & Rake Monster, Channel Monster, Drumscreen Monster, Finescreen Monster, Honey Monster, IPEC, Mini Monster, Monster Industrial, Monster Metal, Monster Separation Systems, Monster Stack, Muffin Monster, Screenings Washer Monster, Sludge Monster, and Wipes Ready are trademarks or registered trademarks of JWC Environmental Inc. in the U.S. and other countries. U.S. patents apply: 7,383,842; 7,086,405; 7,081,171; 7,080,650; 7,073,433; 7,854,850; 7,771,589; 9,421,550; 10,086,320; 10,130,952; 10,421,078; 7,364,652; 11,123,744. U.S. patents pending: 62/609,547; 62/608,884; 62/564,645; 62/564,662; 62/054,656; 17/647,249. Additional patents pending. All rights reserved. JWC Environmental is not liable for damages that may result from any information provided in or omitted from this publication, under any circumstances. JWC Environmental reserves the right to make adjustments to this publication at any time, without notice or obligation. Please check the JWC Environmental website (www.jwce.com) for the most up-to-date information.

(MonsterMetal-NA-JWCE-0122)