

ZERO WASTE MONSTER

Overview

The **Zero Waste Monster (ZWM)** is a self-contained, hopper-fed system designed to separate liquids, gels, creams and semi-solids from their plastic, glass or metal containers. The rugged industrial shredder and separator chews through large quantities of waste, off-spec or expired packaged goods and leaves you with clean and compacted recyclable material. In most cases, the liquid/semi-solid contents can be reprocessed, as well. This system will give you the peace of mind associated with onsite product destruction, while saving you money in waste hauling and landfill fees.

The **Zero Waste Monster** cleans the discharged packaging, so you can command a premium price for your recyclable commodity. Our unique shredding process, prior to separation, increases the exposed surface area so the washing system more thoroughly removes the contents from the packaging. It also allows you to control the flow and direction of the water to suit your needs. If you want to have shorter or longer washing cycles, the **ZWM** can be re-programmed onsite.

Visit us online at www.jwce.com to see the **Zero Waste Monster** in action in our video library. The Zero waste shredder has been tested with sauce packets, soap containers, dog food and other packaged goods applications.

Features & Benefits

Unique Washing and Compacting Process

- System integrates four functions into one compact unit: Grinds, washes, compacts and dewateres waste feed.
- Eliminates the landfill expense associated with off-spec and expired packaged goods (varies based on packaging type and content).
- Onsite product destruction eliminates the risk of product theft during transportation or disposal.

Flexible Design

- Compatible with the 3-SHRED and 4-SHRED industrial shredders and all cutter configurations to handle the largest and toughest packages while controlling the output material size.
- Various spray wash nozzles (i.e. jet, fan, cone) available to suit your needs.
- Control the water flow at the hopper and the wash tank, independently.
- Multiple screen perforations 3/32" - 3/8" (2 mm - 10 mm) to handle waste streams from liquid to semi-solid.

Automated PLC Monitoring and Controls

- PLC accepts input signal from feeding device.
- Automatic on/off cycle for all components.
- Automatic run and cleaning cycles.
- Adjustable washing cycles to optimize cleaning efficiency.

Rollerbase

- Optional roller base allows for movement of unit from building to building, as needed.

Modular Assembly

- Custom configurations for small footprints.
- Customized hopper configurations (optional) connect the system to feed equipment.



From this...

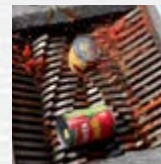
...to this! It takes a Monster to get packaging this clean



Plastic Bottles - Before



Plastic Bottles - After



Metal Cans - Before



Metal Cans - After

Zero Waste Monster

Depackaging and Separation System

Materials of Construction

Tank and Hopper: Stainless steel 304 - w/optional stainless steel 316

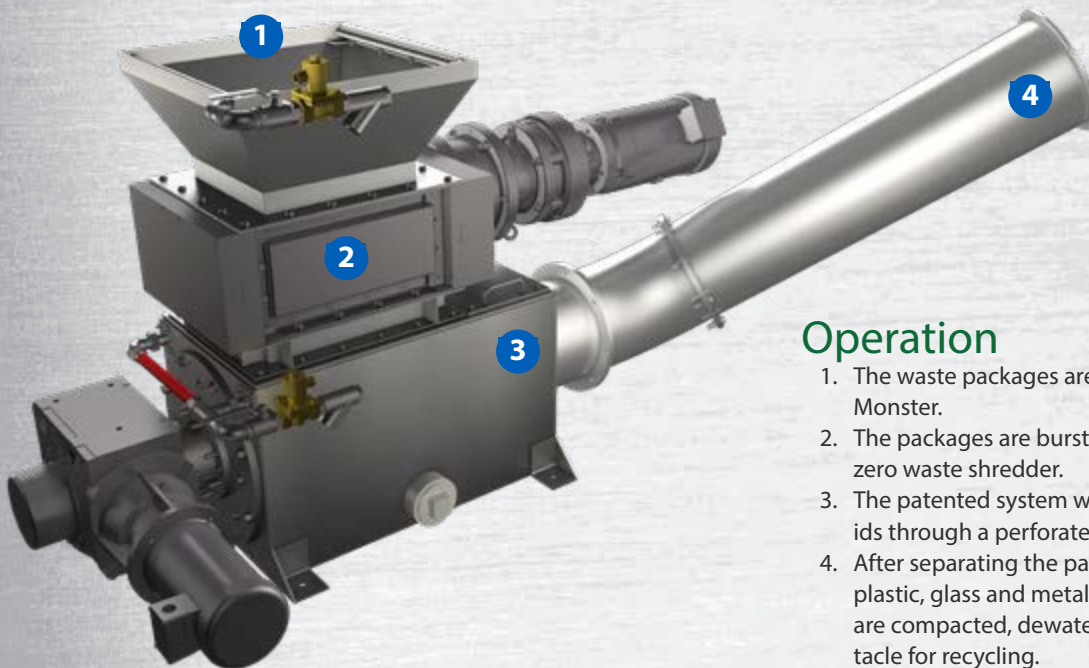
Piping: Stainless steel 304 - w/optional stainless steel 316

Auger: Alloy steel

Grinder: Ductile iron housing; Hardened alloy steel cutters

Equipment Sizing

Feature	Ranges
Capacity	up to 205 ft ³ /hr (5.8 m ³ /hr)
Grinder Motor	3 hp (2.2 kW) - 25 hp (18.7 kW)
Auger Motor	3 hp (2.2 kW) - 5 hp (3.7 kW)
Perforations	3/32" (2mm) 1/8" (3mm) 1/4" (6mm) 3/8" (10mm)
Options	Discharge bagger; roller base; custom hoppers; custom discharge tube lengths



Operation

1. The waste packages are received by the Zero Waste Monster.
2. The packages are burst open as they pass through the zero waste shredder.
3. The patented system washes the liquids and semi-solids through a perforated screen in the tank.
4. After separating the packaging from the contents, the plastic, glass and metal remaining on top of the screen are compacted, dewatered and transported to a receptacle for recycling.



Headquarters
 2850 Red Hill Ave., Suite 125
 Santa Ana, CA 92705 USA
 toll free: **800.331.2277**
 phone: **949.833.3888**
 fax: **949.833.8858**
 email: **jwce@jwce.com**



www.jwce.com